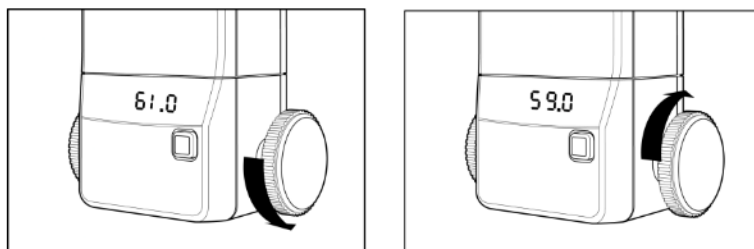


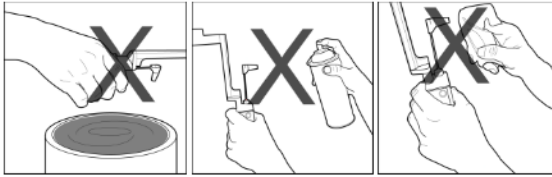
between 59 and 61.



6 Cleaning / Disinfection of Prism

6.1 Disinfection of Prism

1. Must use after clean because measuring prisms are dispatched in a non-disinfected condition.
2. Measuring prisms are cleaned and disinfected correctly. For an optimal cleaning and disinfection the measuring prisms must be submerged and must move freely in the fluid.
3. Prior to disinfection the measuring prisms must be rinsed under cold running water for 30 to 60 seconds. Extremely dirty measuring prisms can additionally be cleaned using a soap and a cotton-wool ball.
4. Measuring prisms to end disinfection are rinsed cold running water.
 - Caution : Time to rinse in water is 10 to a maximum 60 minutes.
5. The measuring prisms should be dried after cleaning, and stored in closed container.
6. To the measuring prisms must not be a residue. Residues can injure to irritation of the patient's eye or chemical burns.



#To the measurement prism there not must be a residue.

Forbidden!

- Disinfection with alcohol
- Cleaning with acetone
- Disinfection with UV irradiation
- Sterilisation with steam or ethylene oxide
- Immersion in fluid longer than one hour
- Temperatures over 60°C

6.2 Accessories Disinfection / Storage

1. Cleaning instrument
2. Storage
3. Disinfectant 'Pantasept®'

